



  
**Floreal**  
Seminars



11<sup>th</sup> – 15<sup>th</sup> October 2021  
Floreal Blankenberge  
Belgium





# Welcome by the Event Sponsors of the NATO Chess Championship 2021

---

Dear soldiers, dear ladies and gentlemen, dear chess players,



Chess has always been considered as a way to develop strategic thinking and the traditional opening, middle and endgame are something we can use to understand international relations between States in general and between Great Powers in particular.

Chinese strategist Sun Tzu's most famous aphorism goes something like this: "If you know neither the enemy nor yourself, you will succumb in every battle. If you know yourself but not the enemy, for every victory gained you will also suffer a defeat. If you know the enemy and know yourself, you need not fear the result of a hundred battles"

So Strategists learn about adversaries by observing their actions and statements, interpreting their behaviour, and studying their leaders and trying to read the mind and culture of the opponent.

This is only possible if we all play the same game with the same set of rules. This assumption has eroded the last decades with China playing GO (influencing international agencies) and Russia using perfectly the surprise element like a 10<sup>th</sup> dan judoka...

Both chess and go are intellectually demanding games with a capacity to entrance if not enrapture the players and both can be use as framework to illustrate geopolitics. So, coming to specific analogies between chess, go and strategy, consider the 'deep penetration raid' – a particular outcome from chess theory. Spectacular instances of success here include the US Navy Seals raid into Abbottabad (2011), the earlier Israeli hostage release at Entebbe (1976) and the extraction of Nazi war criminal Adolf Eichmann from Argentina (1960). Equally, the disasters – the botched US hostage rescue from Teheran (1980) and the infamous Bay of Pigs invasion of Cuba (1960).

On the go theory, the best success example would be of China's astounding economic growth since Deng Xiaoping advised China to keep a low international profile and bide its time, focusing on its own development. The recent more aggressive approach of China could be the announcement they just grown up and play another game better suited to their culture: Weiqi better known in the West as GO.

Anyway, Chess remain intellectually very demanding. So, I wish to all participants a fantastic NATO Chess Championship 2021 in Belgium, and I thank sincerely the all team for organizing this event.

Gilles COLMANT  
Navy Captain

More about geopolitics, chess and GO: [What Chess and 'Go' Tell Us About India and China's Strategic Thinking \(thewire.in\)](https://thewire.in/what-chess-and-go-tell-us-about-india-and-chinas-strategic-thinking)



# Welcome by the Secretary of the International Military Chess Committee

---

**Honorary Chairman, representatives of Belgian military, civilian and chess authorities, chess players and distinguished guests!**



I am highly delighted to see all of you here in Blankenberge, the very heart of Flanders – the Dutch-speaking part of Belgium. And I know very well that coming to the 31<sup>st</sup> edition of the NATO Chess Championship was very difficult due to all COVID-19 related restrictions. The pandemic unfortunately took from us the chance to meet last year. Such things happen from time to time, though, and we simply have to learn to live with it.

Nevertheless, today we can enjoy standing side by side ready to compete for the 31<sup>st</sup> time in the official NATO Chess Championships. Chess is

undoubtedly one of the best sports to exercise the most important organ of our body – the brain. Among its numerous benefits, it teaches planning and strategic thinking, increases problem-solving skills, improves concentration and enhances willpower. Chess imposes deep respect with regard to the opponent. It is widely believed that chess comprises art, science and sport. Hopefully, we will produce games that prove that point.

Our presence here is also a clear proof that our Alliance is united at a time when today's world faces serious safety and security challenges. As we all know well, NATO is an active and leading contributor to peace and security on the international stage. In this vein, I think that NATO sports events like our championships bring a strategic message of solidarity and resilience. With our competitions each year in a different member country we aim at better integration and understanding. Thus, we do our share to keep the Alliance in good shape. This is especially visible here in Belgium, one of 12 founding members, where NATO Headquarters is located.

Ladies and Gentlemen, once again the strongest NATO chess players have gathered here from 15 countries in order to win the main trophy "King Canute". It is a fine NATO tradition to remember the past, and to honour it. I mean by this the veteran players that have come here to play chess but more importantly to pass experience and teach values to a younger generation. This is why our gratitude and admiration for them is even greater. Thank you for coming!

Now, I would like to thank the Belgian Organisational Committee, especially Cpt. Kimball Rosseel and his Team, who worked so hard for at least two years to make this high-class tournament happen. Your commitment and determination in overcoming organisational challenges is much appreciated. We are all happy to enjoy Belgian hospitality and explore Blankenberge and its vicinity.

Players and guests, you are kindly invited to make this tournament a memorable event. I wish all players to give their best and fulfil both their own ambitions and the expectations of their supporters, the spectators to have a good time, and the Organisers to stay strong. Let the strongest win!

I declare the 31<sup>st</sup> NATO Chess Championship open.

Sławomir KĘDZIERSKI  
Lieutenant Colonel

---

## Farewell by the resigning Chairman of the International Military Chess Committee

---

Dear Chess Players



Due to my new job assignment and additional commitments, I am unfortunately no longer able to fulfil my duties as the IMCC Chairman. Almost 20 years of my engagement in NATO Chess gave me a lot of satisfaction and inspiration in my private and professional life. I wish everybody many victories on and off the board! The photo with “King Canute” will always remind me of Our Family.

Tomasz MALINOWSKI  
Colonel

# Welcome by the President of the Royal Belgian Chess Federation

---

**It is really amazing how in life some things come back with the regularity of a clock. One would almost think that coincidence does not exist...**



In the early nineties, I received a phone call from Ben De Cat, who was looking for an arbiter to lead the NATO Chess Championship. I was just infected by the chess virus, had also attended successfully at a course to become an arbiter in chess and according to Ben, I turned out to be one of the highest classified Belgian arbiters.

Together with Ben, I organized the club tournaments which took place every Tuesday evening. Ben and I were, as we say in Belgium, two hands in one. We were a very good team and some even said that we were a perfect team. Despite all that, almost 15 years ago, due to several circumstances, we lost side of each other.

Unfortunately, at that time, I had to disappoint Ben. I could not be the arbiter during that NATO Chess Championship and afterwards, I heard that Luc Cornet had been contacted to be the arbiter during that tournament. And guess what, many years later, the paths of Luc and myself crossed again when we both became members of the board of the Royal Belgian Chess Federation in which we worked very well together just like I worked well with Ben.

Dear guests, dear participants, chess fans, almost more than 30 years after I got in contact with this tournament for the first time, it is my pleasure and my honor to write to you as Chairman of the Royal Belgian Chess Federation. On the one hand, it is difficult for me to realize that during this tournament, a tribute is paid to Ben because we lost a beautiful person. On the other hand, Ben deserves the entire honor that is given to him and I am very proud and humbled to have known Ben so well. I would like to warmly invite everyone all to admire the works of art of Ben during this tournament. And off course I am very pleased that, after all those years, Belgium can be the hosting country for the NATO Chess Championship 2021. It is one of the great tournaments which are organized in Belgium this year and it is my great pleasure to be part of this tournament which brings to me great memories. During one week, the strongest NATO chess players are competing each other in the most noble of all sports.

I would like to thank Cpt. Kimball Rosseel and the Belgian Organization Committee for the excellent organization of this tournament. Only those who have any experience in organizing this kind of tournaments can imagine what challenging job this is. It really is an example of how a tournament like that has to be organized.

Finally, I would like to wish everybody a good, sportive and fair championship. Chess is everything: Art, Science and Sport! (Anatoly Karpov).

Geert BAILLEUL  
President of the Royal Belgian Chess Federation

## Our Partners





# Zot genieten



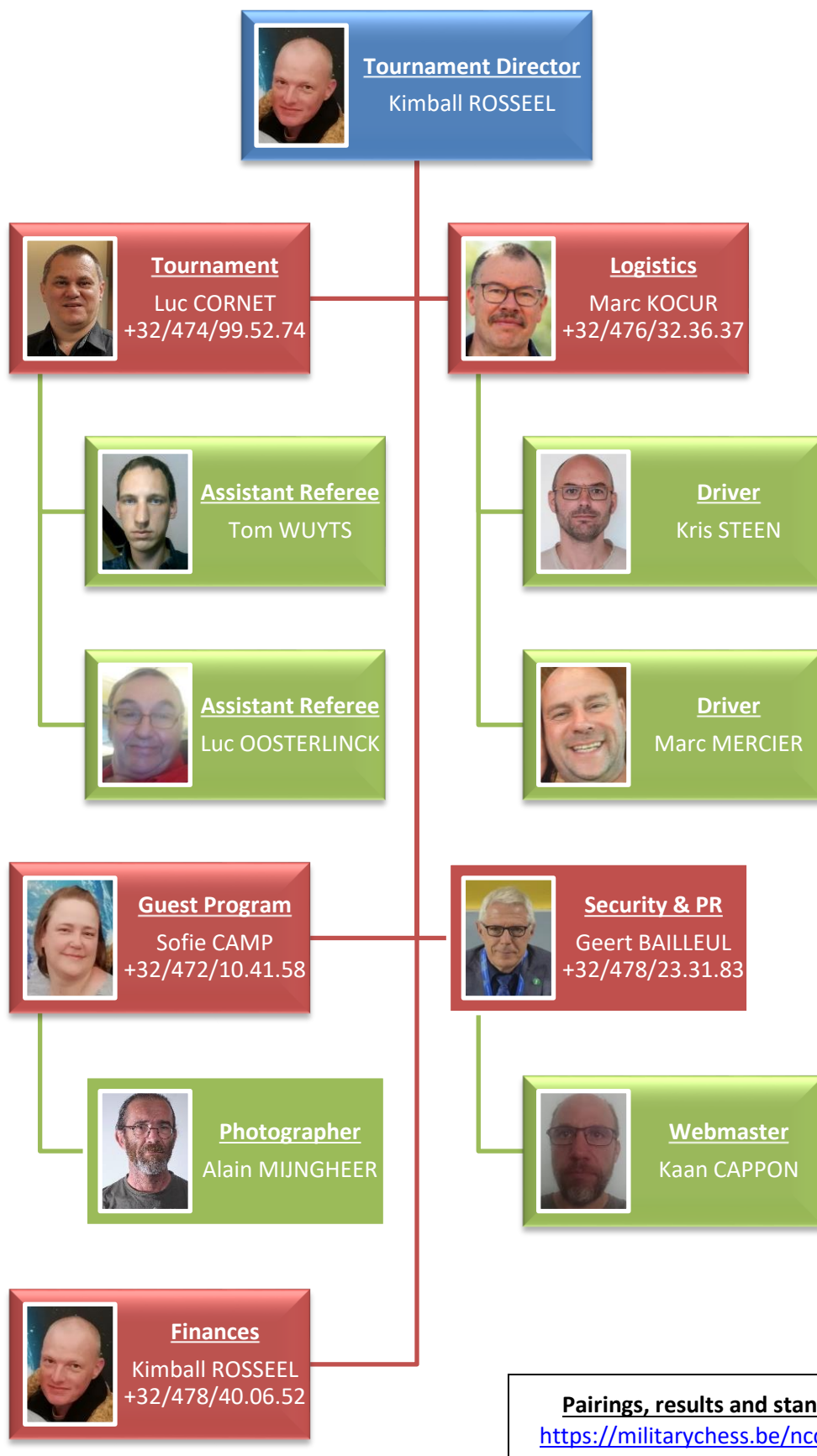
[brugsezot.be](https://brugsezot.be)  
[brugse\\_zot](https://www.instagram.com/brugse_zot)

*Beer brewed carefully, to be consumed with care*



# Our Team

---

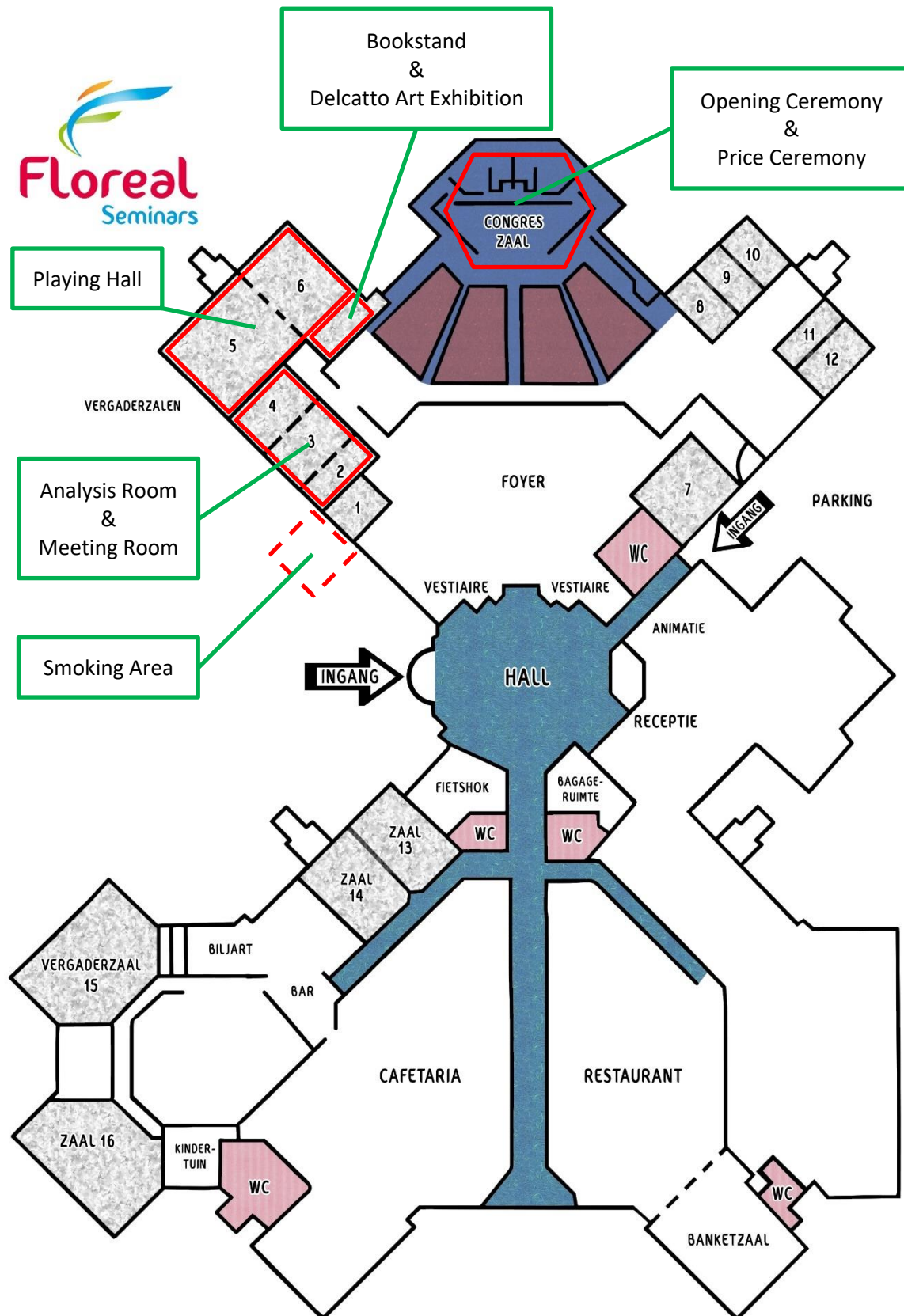


**Pairings, results and standing:**  
<https://militarychess.be/ncc-2021/>

# Our Program

TIME	ACTIVITY	LOCATION	RESPONSIBLE
Sunday, October 10 <sup>th</sup> 2021			
1500Hr – 1700Hr	Arrival of Delegations	Floreal Blankenberge	Sofie Camp
1800Hr – 2000Hr	Dinner	Restaurant	Marc Kocur
2000Hr	Team Captains Meeting	Room 3	Kimball Rosseel
Monday, October 11 <sup>th</sup> 2021			
0630Hr – 0830Hr	Breakfast	Restaurant	Marc Kocur
0900Hr	Opening Ceremony	Congres Zaal	Kimball Rosseel
0930Hr	Official photos	Floreal Blankenberge	
1000Hr	Standing Reception	Foyer	
1200Hr – 1400Hr	Lunch	Restaurant	Marc Kocur
1400Hr	Round 1	Playing Hall	Luc Cornet
1800Hr – 2000Hr	Dinner	Restaurant	Marc Kocur
Tuesday, October 12 <sup>th</sup> 2021			
0630Hr – 0830Hr	Breakfast	Restaurant	Marc Kocur
0800Hr	Round 2	Playing Hall	Luc Cornet
1200Hr – 1400Hr	Lunch	Restaurant	Marc Kocur
1400Hr	Round 3	Playing Hall	Luc Cornet
1800Hr – 2000Hr	Dinner	Restaurant	Marc Kocur
Wednesday, October 13 <sup>th</sup> 2021			
0630Hr – 0830Hr	Breakfast	Restaurant	Marc Kocur
0800Hr	Round 4	Playing Hall	Luc Cornet
1200Hr – 1400Hr	Lunch	Restaurant	Marc Kocur
1400Hr – 1800Hr	Spare Time	Blankenberge	Sofie Camp
1800Hr – 2000Hr	Dinner	Restaurant	Marc Kocur
Thursday, October 14 <sup>th</sup> 2021			
0630Hr – 0830Hr	Breakfast	Restaurant	Marc Kocur
0800Hr	Round 5	Playing Hall	Luc Cornet
1200Hr – 1400Hr	Lunch	Restaurant	Marc Kocur
1400Hr	Round 6	Playing Hall	Luc Cornet
1800Hr – 2000Hr	Dinner	Restaurant	Marc Kocur
2000Hr	IMCC Meeting	Room 3	Kimball Rosseel
Friday, October 15 <sup>th</sup> 2021			
0630Hr – 0830Hr	Breakfast	Restaurant	Marc Kocur
0800Hr	Round 7	Playing Hall	Luc Cornet
1200Hr – 1400Hr	Lunch	Restaurant	Marc Kocur
1430Hr – 1730Hr	Blitz Tournament	Playing Hall	Luc Cornet
1830Hr	Price Ceremony	Congres Zaal	Kimball Rosseel
1900Hr	Gala Dinner Closing Ceremony	Restaurant	
Saturday, October 16 <sup>th</sup> 2021			
0630Hr – 0830Hr	Breakfast	Restaurant	Marc Kocur
NLT 1000Hr	Clearance of the Rooms	Floreal Blankenberge	Marc Kocur
All day	Departure of Delegations	Floreal Blankenberge	Sofie Camp

# Ground Plan





# Our Guest Program

---

## Monday (afternoon)

Belle Epoque and Interbellum walk in Blankenberge

## Tuesday

Day Trip to Bruges

- Visit Streets of Bruges
- Lunch at Brewery De Halve Maan
- Visit to Brewery De Halve Maan

## Wednesday (afternoon)

Photo walking tour through Blankenberge with departure and arrival at Floreal Blankenberge  
or

Free Time

## Thursday

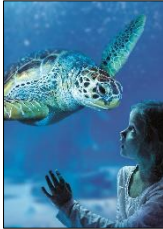
Day Trip to Ostend

- Visit Streets of Ostend
- Lunch in the “City at the Sea”
- Shopping or Free Time

# Sightseeing in Blankenberge

---

## Sea Life



Explore the underwater world's deepest mysterious secrets. At Blankenberge Sea Life you can take an exciting trip up the Amazon and across the seven seas. (B6)

## Belle Epoque Centre

In the Belle Epoque Centre, you get to know the idyllic period in the 19th and early 20th century: the belle époque. (B4)



## Dairy Museum



Over 350 years of cheese and butter making and culture; presented in a thoroughly modern context. Unique to Belgium! (F5)

## Majutte's House

Jump back in time! Once a typical late 18th-century fisherman's dwelling, the cottage is now a fun museum-café. (A3)



## Casino Gaming Room



Enjoy a fantastic evening out at the Casino; American roulette, blackjack, Texas hold 'em poker, slot machines,... (A4)

## Blankenberge and Uitkerke Occupied 1914-1918 walk

This 5-km walk connects the sites and places of interest in Blankenberge which have a special significance and connection with World War I.



# Additional Tourist Information

---

## Knokke-Heist



A top destination on the Belgian coast with a lovely beach, a beautiful nature reserve, plenty of shopping facilities, a wide range of cultural activities, a number of architectural gems and an excellent sports infrastructure. (13 Km)

## Bruges

A warm and friendly place, a place made for people. A city whose history made it great, resulting in a well-deserved classification as a Unesco World Heritage site. (14 Km)



## Ostend



At the only true “City at the Sea” you will discover over 9 kilometers of great sandy beaches that invite you to to a brisk walk along the promenade. (20 Km)

## Roeselare

Flanders is synonymous with cycle racing and cycle racing is synonymous with Flanders. And the origin of this passion was in Roeselare. (47 Km)



## Newport



Even a number of sieges could not break Nieuwpoort's spirit. It rose from its ashes with more charm than ever before. (48 Km)

## Diksmuide

The history of the oldest buildings and small squares in the historical centre already starts in the twelfth century. Discover the richness of the heritage where behind every corner a new story can be found. (50 Km)



## Ghent



Quirky Ghent offers a fascinating cultural cocktail brimming with trendy, modern urban life. Don't miss the chance to admire the world-famous masterpiece “the Mystic Lamb by the Van Eyck brothers”. (59 Km)



# Mobility

---

## Car

Follow the N371 and N31 (direction Bruges) and then the N371 to Blankenberge.

At Loppem / Oostkamp you can take the E40 motorway in the direction of Ghent, Antwerp and Bruges.

Parking: [www.visit-blankenberge.be/en/parking](http://www.visit-blankenberge.be/en/parking)

Charging Points: [www.visit-blankenberge.be/en/charging-points](http://www.visit-blankenberge.be/en/charging-points)

## Train

Direct connections to Bruges, Ghent, Brussels and Genk. Antwerp is also within easy reach.

Timetables and information on tickets etc. can be found online at [www.belgiantrain.be](http://www.belgiantrain.be).

## Tram

From the tram stop “Sea Life / Floreal” (7 minutes walking distance), you can reach every 20 minutes all the seaside towns with the coastal tram in the direction of Knokke-Heist and De Panne.

The stop at the station is connected to various bus routes operated by De Lijn.

Timetables can be found online at [www.dekusttram.be](http://www.dekusttram.be)

## Bus

A scheduled bus service to Bruges (route 33) departs from the stop at the station. The central bus (route 38) will take you to parts of the town located further afield. The call-up bus service (route 36) crosses the entire call-up bus service area of Zuienkerke-Blankenberge.

Online timetables can be found at [www.delijn.be](http://www.delijn.be).

## Taxi

List of available taxi services: [www.visit-blankenberge.be/en/taxi](http://www.visit-blankenberge.be/en/taxi)

## Bike and Go-Kart Rental

List of possibilities: [www.visit-blankenberge.be/en/bike-and-go-kart-rental](http://www.visit-blankenberge.be/en/bike-and-go-kart-rental)

# Accommodation Guidelines

---

## On Arrival

- Bed linen and towels are included in the price and are provided for the number of reserved persons.  
You only receive one parcel of linen and towels for the entire week.
- You need to make up the beds yourself.
- Please check the inventory upon arrival and inform the organization if anything is missing.
- If your studio or apartment appears not to be clean on arrival, please inform the organization as soon as possible, preferably on the day of your arrival.

## Upon Departure

- Collect the bed sheets and lay them along with the towels in the hall of your studio/apartment.
- Wash the dishes and put everything back in the cupboards.
- Fold the blankets and put them back in the correct cupboards.
- Put furniture back in its proper place.
- Empty the dustbins, sort the garbage (glass, paper, ...) and deposit the garbage in the dustbin premises (on the 1st, 2nd or 3rd floor).
- Return your key to the reception.

## Wi-fi

- Floreal Guest or Floreal Holiday (no password required).

## Opening Hours

- Bar: until midnight, depending on the number of customers present.
- Reception from 0800Hr till 2000Hr.

# Emergency Services

---

On-Call Doctor:	1733 <a href="http://www.kgbn-habo.be">www.kgbn-habo.be</a>
On-Call Pharmacy:	+32/903/99000 <a href="http://www.apotheek.be">www.apotheek.be</a>
On-Call Dentist:	+32/903/39969 <a href="http://www.tandarts.be">www.tandarts.be</a>
Doctor:	Artsenpraktijk “Eglantier” Zeebruggelaan 81 8370 Blankenberge +32/50/41.48.77
Ambulance:	112
Fire Department:	112 or +32/50/41.10.46
Police:	101 or +32/50/42.98.42
Hospital:	AZ Zeno Campus Blankenberge Dr. Fr. Verhaeghestraat 1 8370 Blankenberge +32/50/43.41.11



# City Map of Blankenberge

